

# Technical Datasheet

## INERTECH™ Gaseous Fire Suppression System



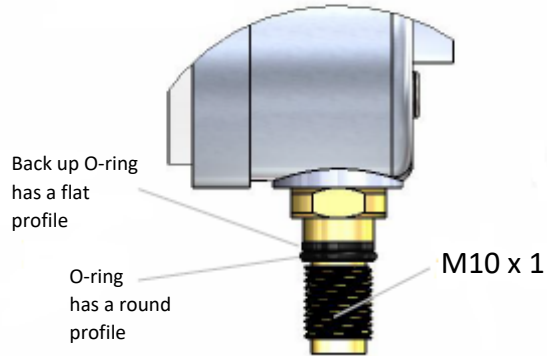
### Pressure Gauge 300 Bar - NF385023

The pressure gauge incorporating low pressure switch is connected to the cylinder valve via the M10 x 1 port. When fitting the pressure gauge, screw the unit into the port until it stops (finger tight), if necessary, turn it back to a maximum of one revolution for correct orientation of the gauge dial. Before screwing the gauge into place, check that the 'O'-ring seal and back-up ring are not damaged.

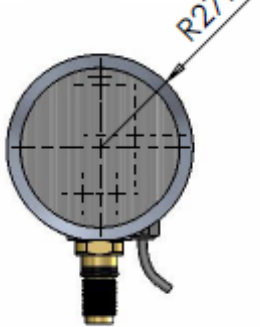
If 'O'-ring replacement is required please note the installation diagram shown here.

It is possible to mount and remove the gauge while the container valve is pressurised.

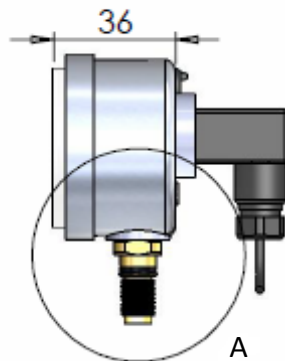
DETAIL A



FRONT VIEW



SIDE VIEW

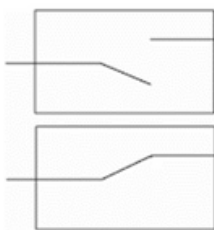


BACK VIEW



Kentec Sigma XT panel

Event	Message	Fault	Alarm
Switch Open	Exting Press Fault	Fault light	Buzzer
Short Circuit A	Low Press I/P Fault	Fault light	Buzzer
Open Circuit B	Low Press I/P Fault	Fault light	Buzzer

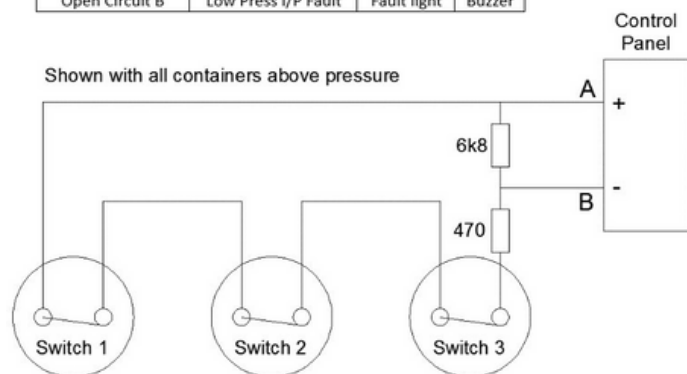


Normally Open when cylinder pressure low (i.e. <270 bar)

Normally Closed when connected to pressurized cylinder

Above 270 bar switch is normally closed (correctly pressurized cylinder 300 bar).

If cylinder pressure drops below 180 bar the switch opens and the circuit is broken. Minimum 270 bar are required to keep switch closed and maintain monitoring circuit



For Kentec Panel:

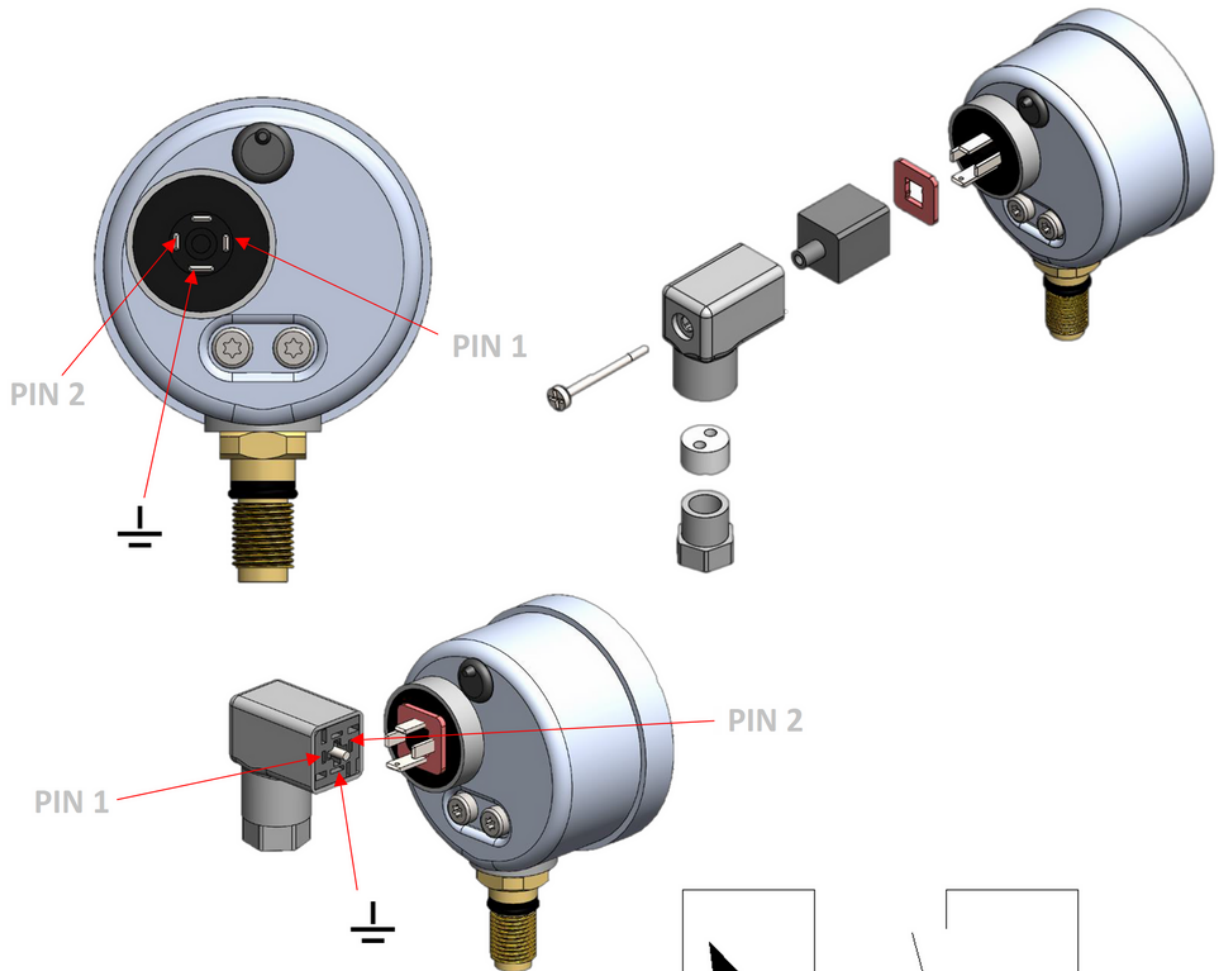
- Low Pressure switch input inverted on panel
- Circuit valid for Sigma XT+ Series 21000 other panels may vary

# Technical Datasheet

**INERTECH™** Gaseous Fire Suppression System



## Pressure Gauge 300 Bar - NF385023



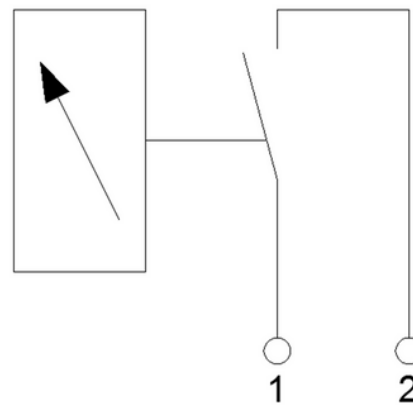
### Technical specs:

P range: 0-400 bar

U=4.5-24VDC/VAC

I=5-100mA

P switch = 270bar +/- 0.9bar



Status of switch at minimum scale value  
Closed contacts at pressure